




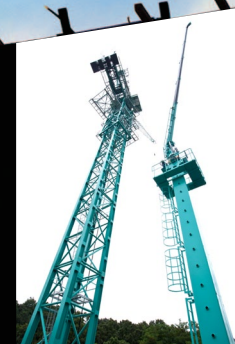
HKTC Telescopic Boom Type **Stationary** Crane

High value-added **Stationary** Crane

By manufacturing innovative lifting equipment to fulfill your needs, HKTC continues to share new experiences and values we make to you.



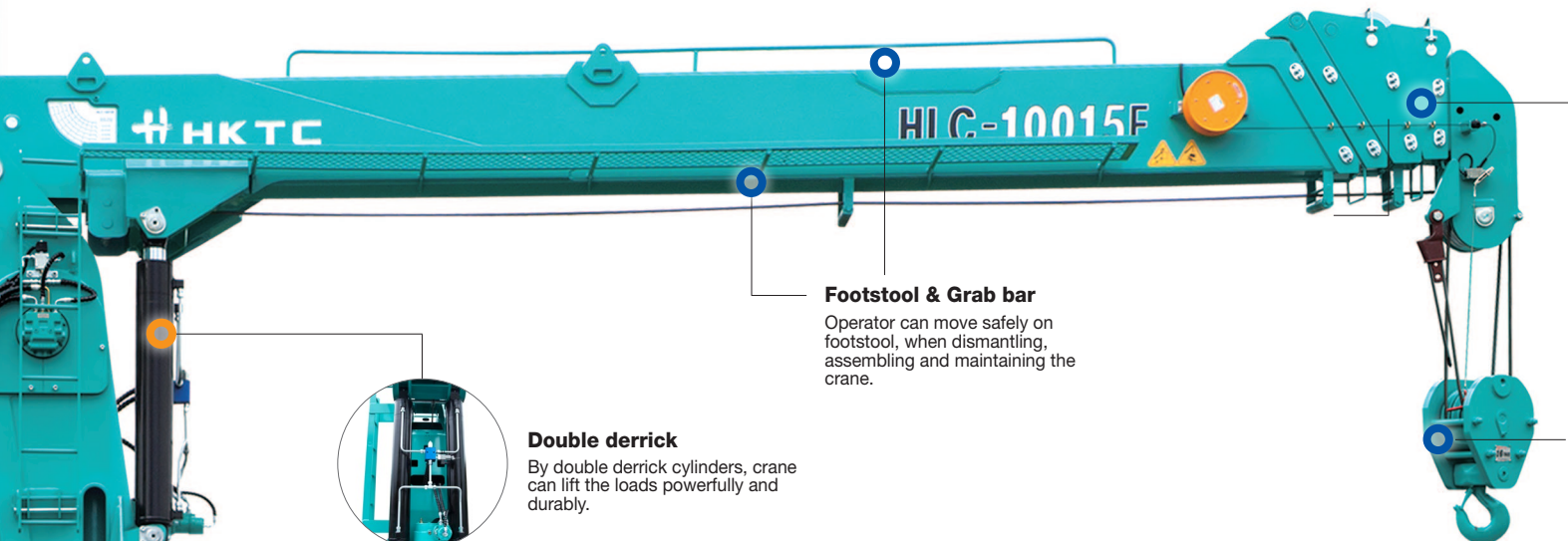
HKTC's stationary crane is a complementary Goods of Tower Crane in construction sites, which can be operated for the streamlined lifting work even in confined place.



Premier Performance

Reliable, Durable, Maneuverable and Innovative Telescopic Boom Type Stationary Crane

Designed to maximize capability, durability and convenience, starting from development stage.



Footstool & Grab bar
Operator can move safely on footstool, when dismantling, assembling and maintaining the crane.

Double derrick
By double derrick cylinders, crane can lift the loads powerfully and durably.

3 Plating Galvanization
Bolts, Nuts and Steel plates are fully galvanized to prevent Rust.

Hook
By wire rope guide or rope mold, wire rope can be adjusted with ease for layer change.



Motor & Pump
Motor and Pump are designed to minimize the vibration, during the conversion of electrical & mechanical energy.



Control Panel
External electric power is regularly transmitted to Motor and Alternating current can be changed into Direct current.



Winch
By 2 speed motor, high speed & low speed operation can be made.



Remote Controller
By remote controller (HETRONIC), crane operation can be made even on the ground.



Cooler
Oil cooler helps oil temperature stay cool, which can minimize heat loss for high efficiency



Over center valve
By high-quality over-center valve, durability is improved. It can prevent Boom & Derricks falling down.



Control Valve and Lever
In case of emergency, manual operation can be temporarily made on the work platform

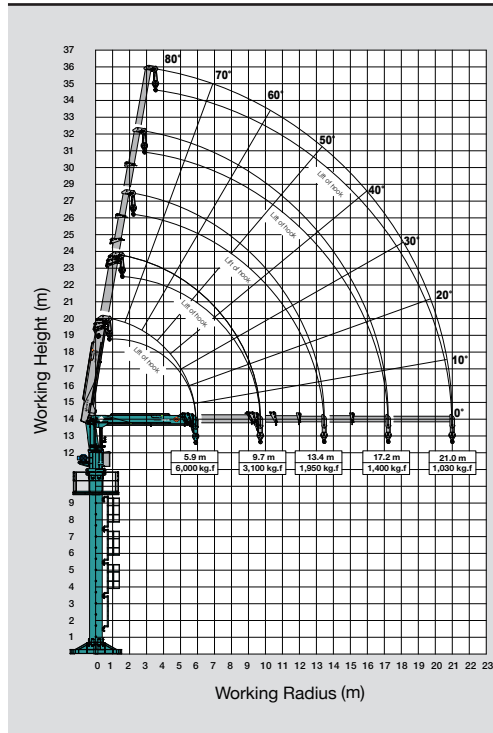


10m Mast
10m Mast is a commonality item and can be used for placing boom also.



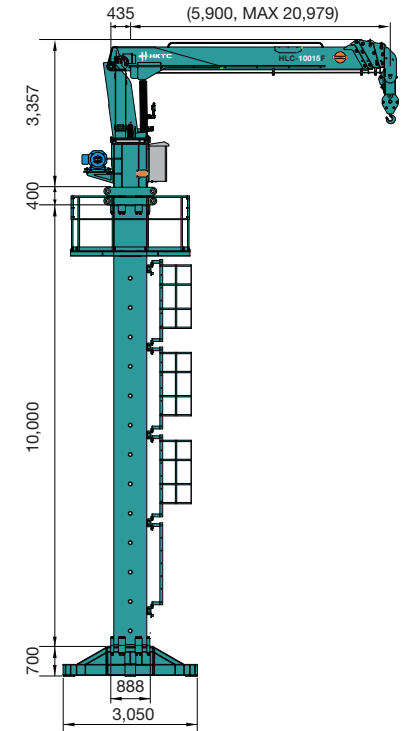
Stationary Crane (HLC-10015F)

WORKING RADIUS / SPECIFICATION



Max. Lifting Capacity (최대 인양 능력)		10,000 kg / 3.0 m
Max. Working Radius (최대 작업 반경)		1,030 kg / 21.0 m
Min. Working Radius (최소 작업 반경)		2.0 m
Rated Oil Flow (정격 유량)		73 cc / rev
Max. Pressure (최대 압력)		210 kg / cm ²
Oil Tank Capacity (작동유 탱크 용량)		250 ℓ
Winch (윈치)	Type (형식)	와이어 로프 Ø 14x120 m [19x7 비자전성]
	Hook Speed (권상 속도)	13 m / min (4/4), 저속시
Power (동력)	Type (형식)	Hydraulic power unit / 50HP. 6P
	Power Supply (전원)	380 V / 60 Hz (To be changed, according to construction site or operator's requirements.)
Working Type (작동 방식)		Remote Controller (리모트 컨트롤러, HETRONIC사) 및 수동 작동 가능
Safety Devices (주요 안전 장치)		Pressure relief valve for hydraulic circuit (유압 안전 밸브)
		Counterbalance valve for derrick and telescopic cylinders (데릭 오버 센터 밸브 & 텔레스코픽 오버 센터 밸브)
		Automatic Hydraulic brake for winch (윈치 자동 유압 브레이크)
		Hook safety latch (후크 안전 고리)
		Over-winding Prevention Device (과권 방지 장치 및 경보장치)
		Oil Cooler (오일 콜러)
		Over-load Prevention Device (과부하 방지 장치)
	Safety belt & Grab bar (안전벨트 및 난간대)	

DIAGRAM



- Remarks
1. According to Boom section adjustment and optional item application, variant models can be available.
 2. The specifications are subject to change without prior-notice, according to product improvements.
 3. The separate Contract with specification sheet prevails the above-mentioned Specification.