



HKTC Telescopic Boom Type Lorry Crane





Never stop evolving

To pioneer new way up to the invisible beyond customer's expectation, HKTC offers high-end cranes, which are new things to be seen and to be felt.

Roller bearing to slide outriggers is advantageous to cost effective maintenance and smooth movement of outriggers.



Premier Performance

Reliable, Durable, Maneuverable and Innovative Telescopic Truck-Mounted Crane

Designed to maximize capability, durability and convenience, starting from development stage.



Boom Sliding Pad

By thin groove on pad surface, cost effectiveness for grease injection can be made.

3 Plating Galvanization

All components are fully galvanized to prevent rust.



Over center valve

By high-quality over-center valve, durability is improved. Overload can be controlled by pressure switch.



Hoist Winch

For safety, automatic mechanical brake is equipped and running noise is small.



Over-hoisting prevention device

By wireless over-hoisting prevention device, it can prevent damage and breakdown of wire and reel.



Top seat console

Optimally & ergonomically designed top seat console guarantees all day comfort to operator.



Slewing reduction gear

For smooth but powerful operation, hydraulic internal brake and worm reduction gear are equipped.



Wire separation prevention device

It guarantees 3 full turns of wire rope to remain on winch drum, to prevent wire from being separated.



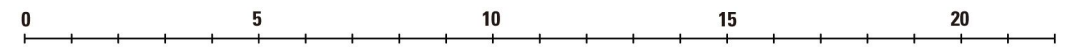
Main outrigger

180° slewing type of main outriggers help protect against damage during the drive.

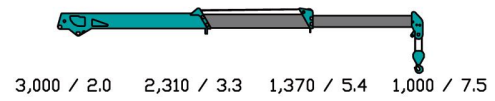
Manufactured in compliance
with the highest standards
in design, durability and safety,
HKTC cranes ensure optimized
performance.



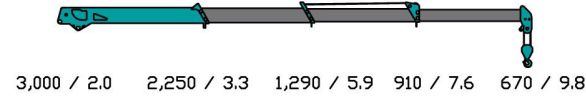
Loading Capacity kg / m



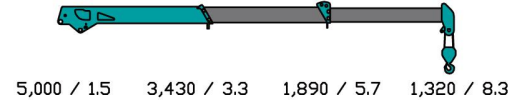
3013M



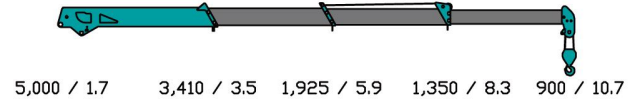
3014M



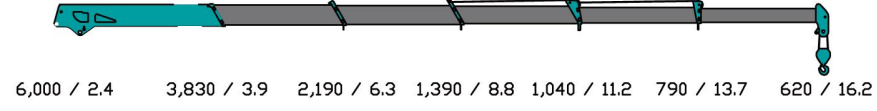
5013M



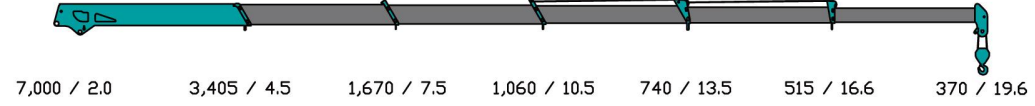
5014M



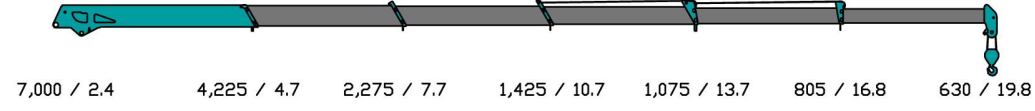
7016S



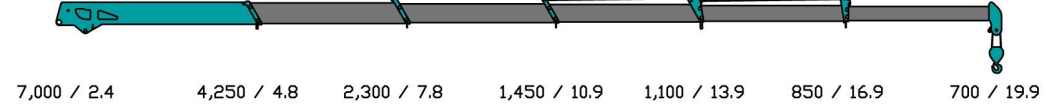
7016L



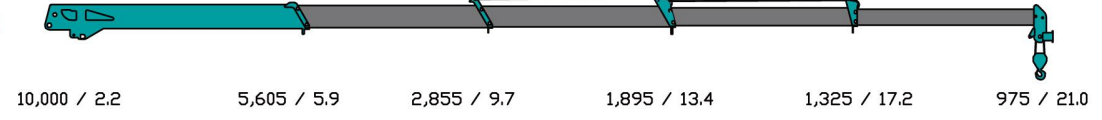
8016S



8026S



10015SS



High value added **LORRY CRANE**

Designed with dedicated efforts to become 1st player in lifting industry

To manufacture 'MASTERPIECE' crane, HKTC thinks ahead to be perfect and leaps ahead to be customer-oriented, through the continuous field test.

Durable boom & best performance

All booms made by ATOS80 having high tensile strength are designed to maximize durability under the smooth & powerful performance.

Stable & safe outriggers

Outriggers having the maximum span can guarantee operation safety and protect truck and crane during the operation.

Main outriggers are optionally designed in slewing type, not to be damaged during the drive on sloping ground.



Telescopic boom type lorry crane

		HLC-3013M	HLC-3014M	HLC-5013M	HLC-5014M	HLC-7016S	HLC-7016L	HLC-8016S	HLC-8026S	HLC-10015S	
Operation		By Side Lever					By Top Seat Console (Optionally By Side Lever)				
Lifting Capacity		3.0 ton / 2.0 m	3.0 ton / 2.0 m	5.0 ton / 1.5 m	5.0 ton / 1.7 m	6.0 ton / 2.4 m	7.0 ton / 2.0 m	7.0 ton / 2.4 m	7.0 ton / 2.4 m	10.0 ton / 2.2 m	
Maximum Working Radius		7.5 m	9.8 m	8.3 m	10.7 m	16.2 m	19.6 m	19.8 m	19.9 m	21.0 m	
Maximum Lifting Height		9.5 m	12.7 m	10.2 m	13.0 m	18.5 m	22.0 m	22.0 m	22.0 m	24.0 m	
Section-Wise Rated Capacity (kg / m)	1st	2,310 / 3.3	2,250 / 3.3	3,430 / 3.3	3,410 / 3.5	3,830 / 3.9	3,405 / 4.5	4,225 / 4.7	4,250 / 4.8	5,605 / 5.9	
	2nd	1,370 / 5.4	1,290 / 5.9	1,890 / 5.7	1,925 / 5.9	2,190 / 6.3	1,670 / 7.5	2,275 / 7.7	2,300 / 7.8	2,855 / 9.7	
	3rd	1,000 / 7.5	910 / 7.6	1,320 / 8.3	1,350 / 8.3	1,390 / 8.8	1,060 / 10.5	1,425 / 10.7	1,450 / 10.9	1,895 / 13.4	
	4th	-	670 / 9.8	-	900 / 10.7	1,040 / 11.2	740 / 13.5	1,075 / 13.7	1,100 / 13.9	1,325 / 17.2	
	5th	-	-	-	-	790 / 13.7	515 / 16.6	805 / 16.8	850 / 16.9	975 / 21.0	
	6th	-	-	-	-	620 / 16.2	370 / 19.6	630 / 19.8	700 / 19.9	-	
Boom	Boom Section	3	4	3	4	6	6	6	6	5	
	Boom Structure	Hexagonal Box Beam with Angle Indicator to be Fully Powered by Hydraulics									
	Cylinder + Wire	1 + 1	2 + 1	2 + 0	2 + 1	3 + 2	3 + 2	3 + 2	3 + 2	2 + 2	
	Raising Angle / Speed	0° ~ 80° / 9 sec	0° ~ 80° / 9 sec	0° ~ 76° / 13 sec	0° ~ 76° / 14.7 sec	0° ~ 80° / 16 sec	0° ~ 80° / 17 sec	0° ~ 80° / 15 sec	-16° ~ 79° / 16 sec	0° ~ 80° / 20 sec	
Body	Slewing	Hydraulic Motor Axial Plunger Type Driven, on a Ball Bearing Race. Worm and Spur Gear Reduction									
	Rotation	360° Continuous Rotation (right or left)									
	Slewing Speed	2.0 rpm									
Outrigger (Main)	Type	Slewing Type								Box Type	
	Vertical Jacks	Double Acting Hydraulic Cylinders with Pilot Check Valves									
	Horizontal Beams	By Manual					By Hydraulics				
	Span	2.1 m ~ 4.1 m		2.3 m ~ 4.2 m			2.3 m ~ 5.5 m			2.3 m ~ 5.8 m	2.7 m ~ 6.6 m
Safety Devices	Pressure Relief Valve for Hydraulic Circuit										
	Counterbalance Valves for Boom Raising and Telescopic Cylinders										
	Pilot Check Valves for Vertical Outrigger Cylinders										
	Boom Angle Indicator										
	Hook Safety Latch										
	Automatic Mechanical Brake for Winch										
	Overwinding Alarm Device										
	Mechanical Brake for Slewing Reduction Gear										
	Warning Alarm										
	Emergency Stop Switch										
	Wire Separation Prevention Device (Option)										
	Overwinding Prevention Device (Option)										
Overloading Prevention Device (Option)											
Automatic Moment Limiter (Option)											

Remarks

- 1 According to Boom section adjustment and optional item application, variant models can be available.
- 2 The specifications are subject to change without prior-notice, according to product improvements.
- 3 Rated capacity can be changed, according to crane strength, vehicle weight, loaded condition, crane mounting position, operating condition and the likes.
- 4 The separate Contract with specification sheet prevails the above-mentioned Specification.



Hankook Tower Crane Co. Ltd
 1191, Chopyeong-ro, Chopyeong-myeon, Jinchun-gun, Chungbuk. Korea
 TEL +82-70-4487-8030 FAX +82-43-838-5353 e-mail snha@htkc.co.kr
 www.htkc.co.kr